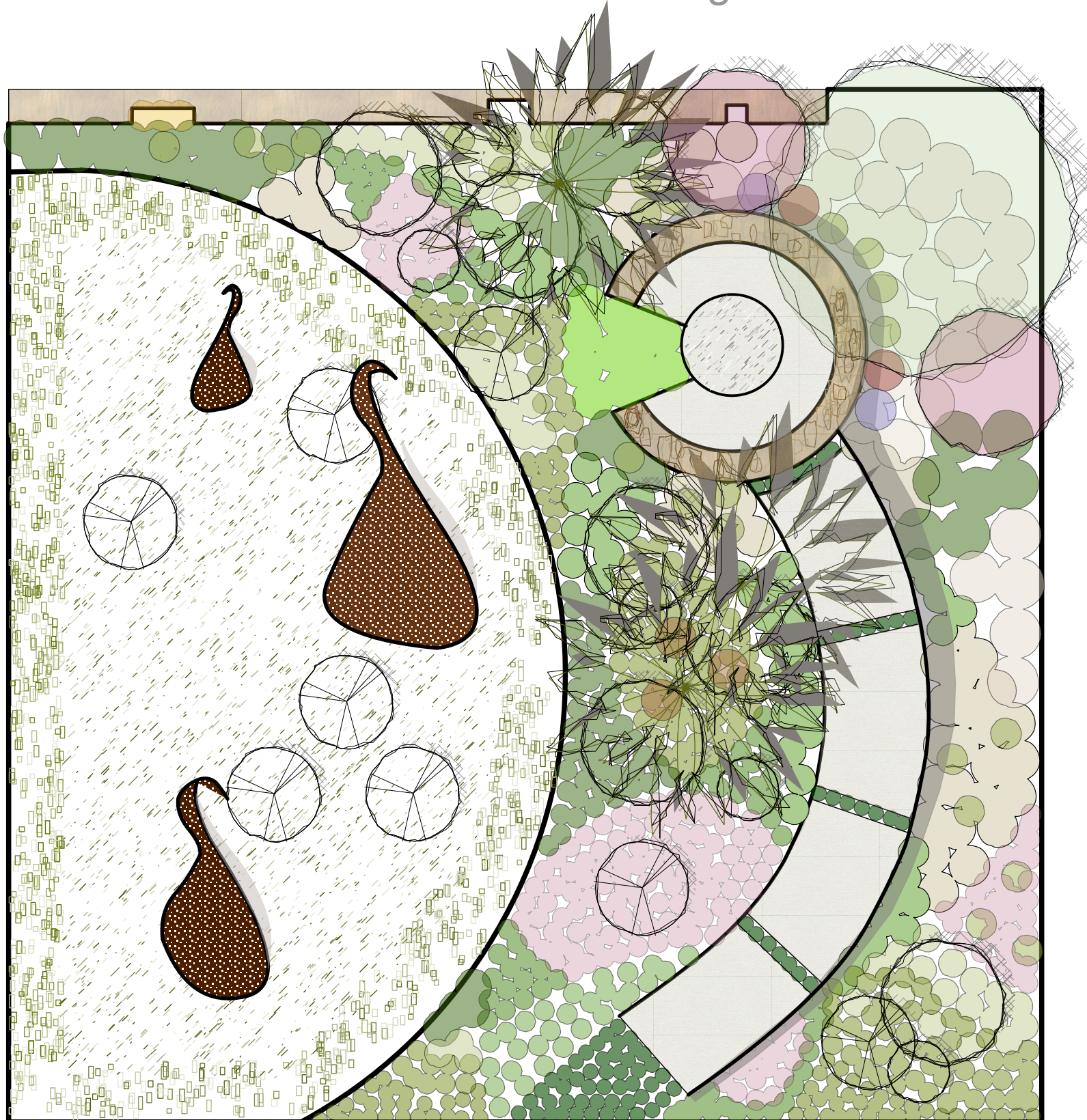


# Ellerslie International Flower Show 2013

# Modern Day Moa

Our dream of living with the Modern Day Moa....

With special thanks to:



PLANT SCHEDULE:	
	Annuals (Mixed)
	<i>Acer</i> species: Japanese maple
	<i>Asplenium nidus</i> : Birdsnest fern
	<i>Baumea articulata</i> : Jointed twig rush
	<i>Blechnum discolor</i> : Crown fern
	<i>Blechnum fluviatile</i> : Kiwikiwi
	<i>Blechnum novae-zealandiae</i> : Kiokio
	<i>Blechnum penna-marina</i> : Groundcover fern
	<i>Ctenanthe setosa</i> 'Grey Star' : Ctenanthe
	<i>Cyathea cooperii</i> : Lacey Tree Fern
	<i>Dicksonia squarrosa</i> : Wheki Ponga
	<i>Tillia cordata</i> : Linden Tree
	<i>Gardenia radicans</i> : Gardenia
	<i>Gardenia veitchii</i> : Gardenia
	<i>Hydrangea</i> 'Bridal Bouquet' : Hydrangea
	<i>Hydrangea</i> 'Snowball' : Hydrangea
	<i>Hydrangea quercifolia</i> : Oakleaf Hydrangea
	<i>Juncus pallida</i> : Native Rush
	<i>Liriope muscari</i> : Turf lily
	<i>Michelia gracipies</i> : Michelia
	<i>Ligularia dentata</i> : Summer Ragwort
	<i>Philodendron sagittifolium</i> : Philodendron
	<i>Philodendron cannaefolium</i> : Philodendron
	<i>Philodendron bipinitifidum</i> : Philodendron
	<i>Phormium steelii</i> : Steel flax sculpture
	<i>Ravena glauca</i> : Miniature Majestic palm
	<i>Rosa</i> 'Amber' : Carpet rose
	<i>Stromanthe sanguinea</i> : Stromanthe

**city care**  
Our people. Making it work.

**SHUTER**  
DESIGN CO

**Adam Shuter**  
PH 0226-820-283.  
adam@shuter.co.nz  
www.shuter.co.nz

**TONY MURRELL**  
AND ASSOCIATES

**Tony Murrell**  
PH 021 891 992  
tony@murrellgroup.com  
www.murrellgroup.com

**PLANTING PLAN**  
**EFS**  
**Hagley Park**  
**Christchurch NZ**  
**Scale: 1:50@A3**  
**Date: Feburary 2013**